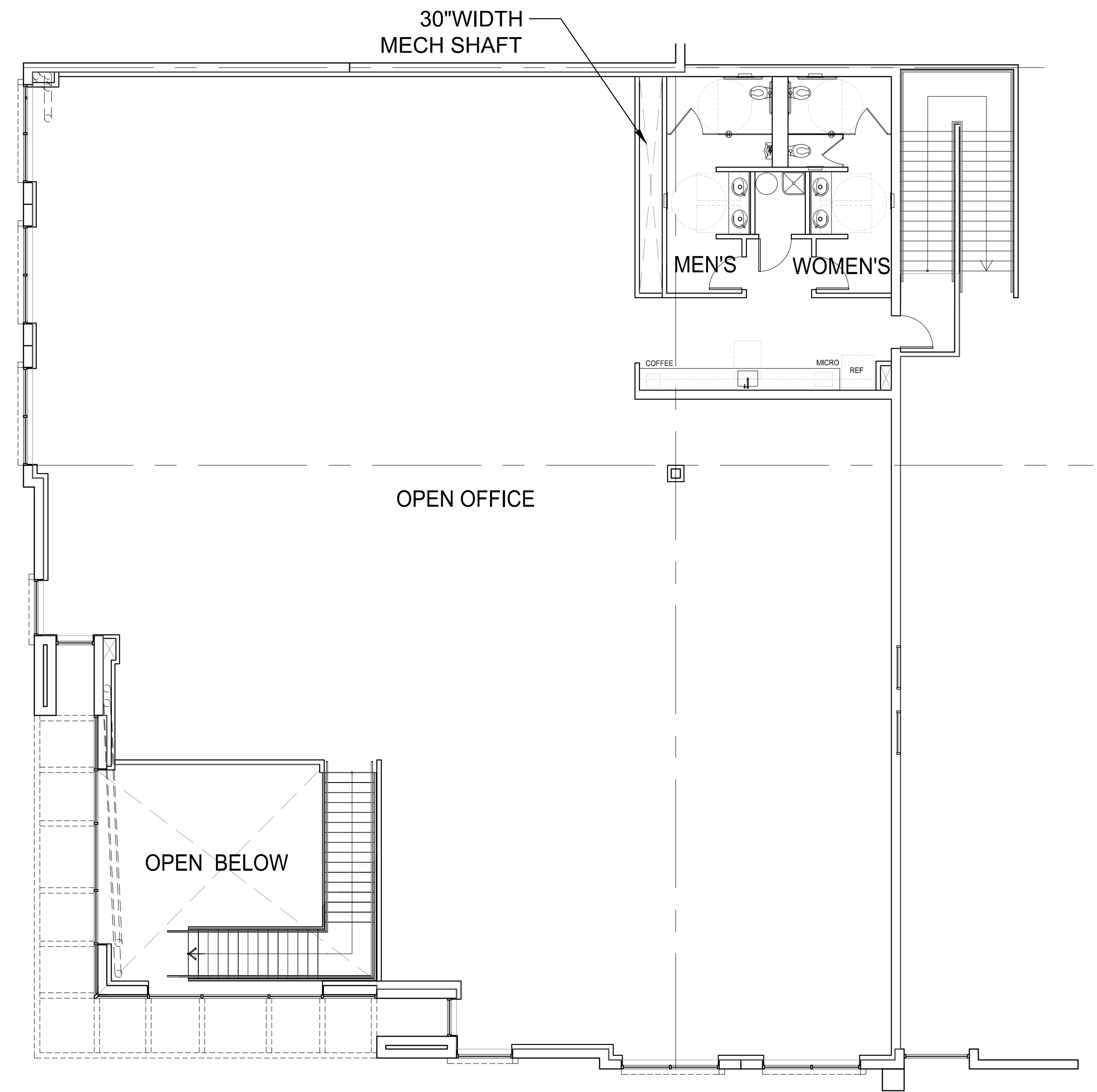


GROUND FLOOR PLAN A
scale: 1/8" = 1'-0"
 TRUE NORTH



MEZZANINE FLOOR PLAN B
scale: 1/8" = 1'-0"
 TRUE NORTH

AREA

GROUND FLOOR : 6,752 S.F.

MEZZANINE FLOOR : 6,290 S.F.

TOTAL : 13,042 S.F.